



Standard two-engine control
head in black finish



Control head in white finish
and "E" style handles

MODEL 6505S CONTROL HEAD (MIGHTY MARINER SYSTEM)

This unit has a compact design yet offers all of the features and accuracy of our larger models. Evolved from the popular 6505 model, the 6505S head includes a microprocessor that is used exclusively with the Mighty Mariner system.

The unit can be used

- in combination with the 6527-S clutch/throttle actuator for mechanical control
- in conjunction with Model 6503 Electronic Interface unit to provide electric clutch / electronic throttle outputs

The unit can be used on a single or twin engine configuration. (See examples on the reverse page for different system configurations.)

The unit incorporates the latest technology with provision for switch pad buttons for Station Select, Station Lock, Throttle Override and Synchronizer.

The housing and handles are constructed in all bronze and stainless steel. The standard unit comes in chrome, black epoxy, white or polished bronze finish.

The unit is watertight from the top side and can be used anywhere on board ship. However, the bottom side must be protected from the environment.

For more information about the Mighty Mariner system, please contact Kobelt Manufacturing or visit the website <http://www.kobelt.com>

MODEL 6505 S

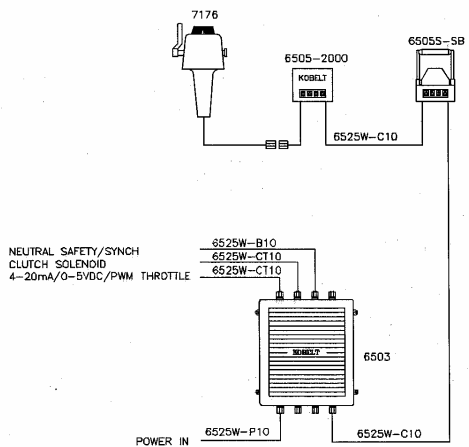
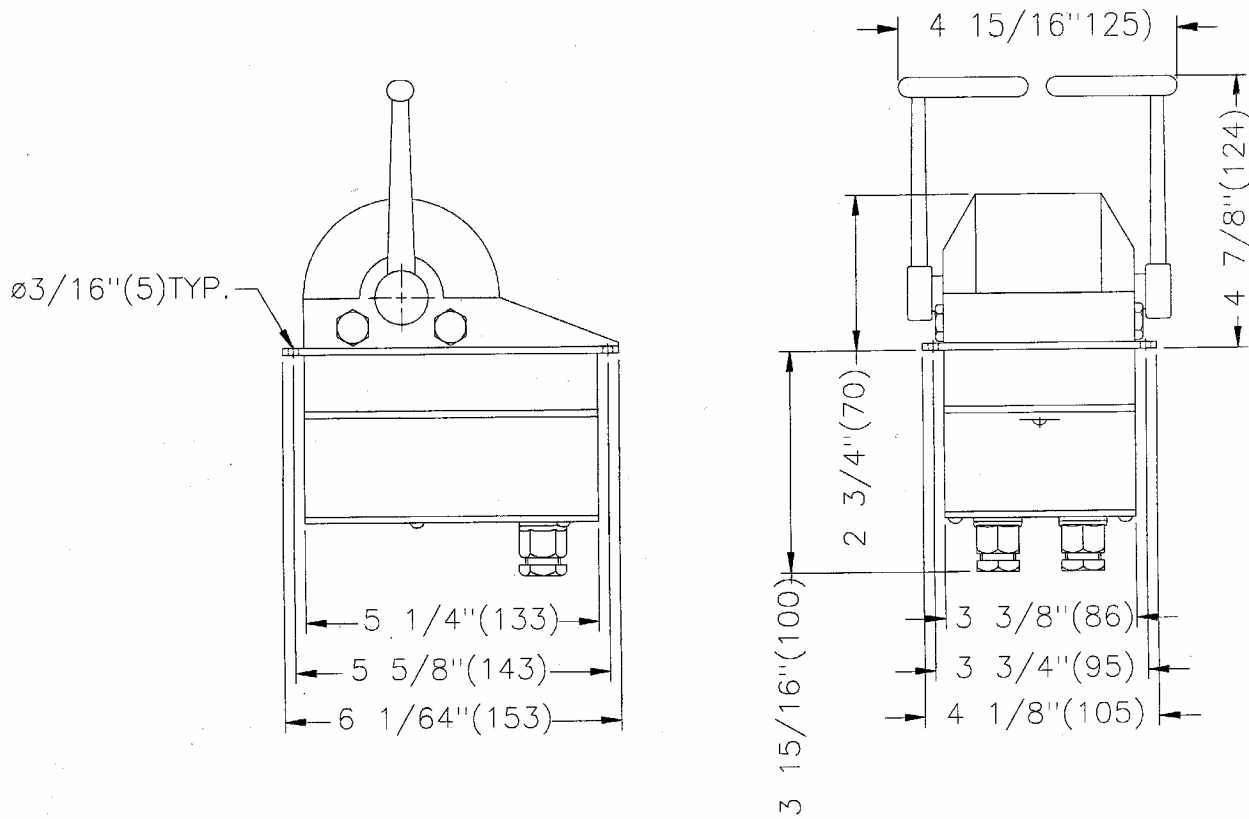


Fig.1 Two control stations for electronic throttle output and electric clutch control configuration

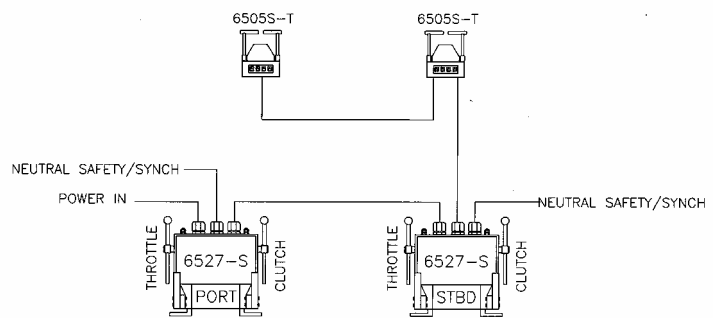
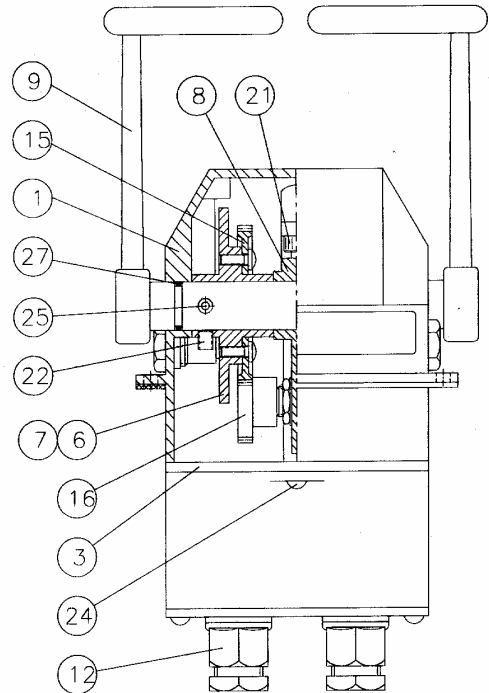
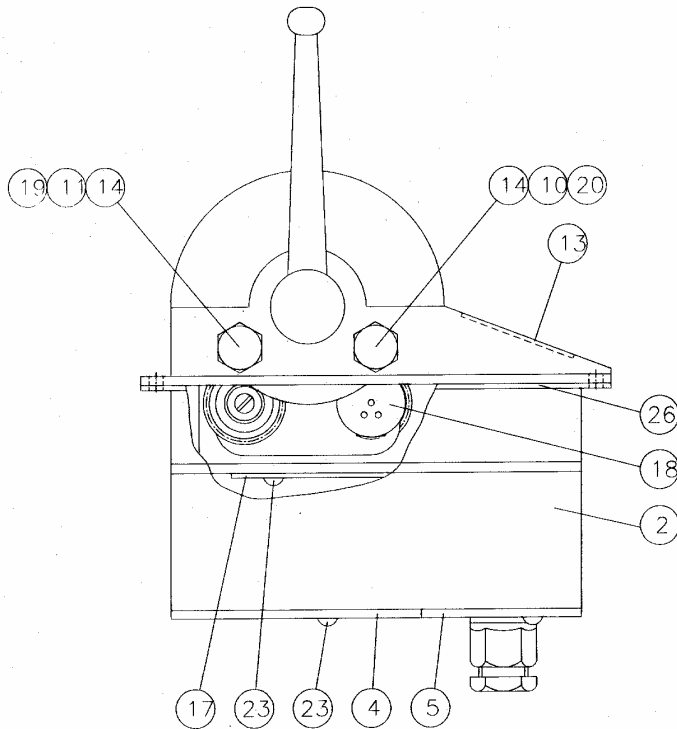


Fig. 2 Two stations Twin engine clutch/throttle actuator configuration

Parts List Model 6505S



Item	Qty	Part Number	Description	Item	Qty	Part Number	Description
1	1	6505-0001	Dome	15	2	6505-3264	Spur Gear
2	1	6505-0002	Lower Box	16	2	YPB-3232	Gear
3	1	6505-0003	Mounting Frame	17	1	6505-2001	Circuit Board
4	1	6505-0004L	Cover Plate - large	18	2	POT-5	Potentiometer 5K
5	1	6505-0004S	Cover Plate - small	19	2	1201-0205	Friction Spring
6	1	6505-0005L	Cam - left	20	2	1201-0206	Detent Spring
7	1	6505-0005R	Cam - right	21	2	1002-0808	Socket Hd Cap Screw
8	1	6505-0006	Bracket	22	2	1016-0804	Hex Socket Set Screw
9	2	6505-0007	Handle	23	12	1012-0604	Pan Hd Philips M.S.
10	2	2009-0011	Detent	24	2	1012-0608	Pan Hd Philips M.S.
11	2	2542-0008	Friction plug	25	2	1024-0816	Spring Pin
12	2	6001-0249	Connection Gland	26	1	6505-0010	Gasket
13	1	6509-0019	Membrane Switch	27	2	1101-0014	"O" Ring
14	4	6509-0007	Detent Plug				