



Cushyfloat Mounting



17/1600 | 17/1609 | 17/1657 | 17/1841

Cushyfloat® Mounting

The Cushyfloat® mounting is a general purpose unit designed to provide effective isolation of vibration and noise arising from both static and mobile equipment.

Originally designed for use with marine engines, the Metalastik Cushyfloat® is a simple to install, compact, low profile mounting. It combines 3 way control of the suspended equipment with relatively large static deflections where the rubber is loaded in shear and compression.

The design incorporates bump and rebound control features which limit excessive movements under shock loading. Top metal cover gives protection against oil contamination and protective finish resists corrosion attack. Propeller thrust on marine applications is accommodated. There are four sizes in the standard range with varying degrees of rubber hardness catering for point loads from 32kg to 3000kg. Natural frequencies as low as 8Hz are possible.

Typical Applications Include:

- Marine/industrial vehicle engines
- Portable gensets and pumps
- Generator sets
- Pumps and compressors

About Trelleborg Industrial AVS

Over 100 years of experience as Metalastik and Novibra, today Trelleborg Industrial AVS make improvements people can physically feel. From smoother travel to quieter, more efficient machines, we make life feel better. With quality, testing and compliance built in, we're in it for the long haul, ensuring your solution still works, over an extended and often arduous life-cycle.

With three state-of-the-art manufacturing plants across the globe, our experience in rubber to metal bonding enhances several industries, including off-highway vehicles, rail and mass transit, marine and energy and general industry.

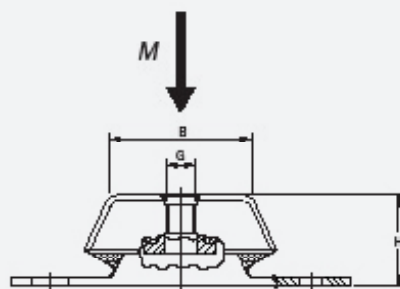
We offer an end-to-end service, to take you from concept through design, manufacturing and testing to delivery. This reduces the complexity of supply, helping you cut costs, mitigate risk and receive on time, on budget delivery.

Trelleborg IAVS is part of Trelleborg Group, which employs 15,000 people in over 40 countries. Whatever your challenge, whatever your role and wherever you are, we are nearby to offer expert knowledge and quality solutions.

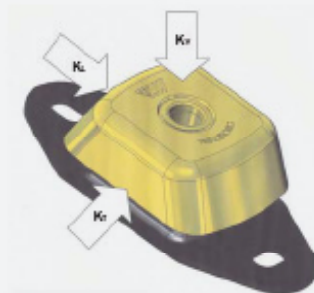
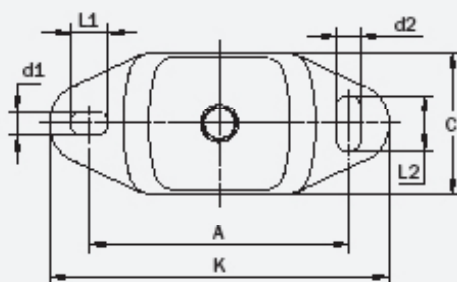
Cushyfloat® 17/1600 | 17/1609 | 17/1657

The ideal stiffness ratios are a guarantee for optimal isolation in vertical and lateral direction (shown in the table below). Especially in light-build leisure boats, Cushyfloats give excellent results reducing vibration to a minimum and a significant (structure borne) noise reduction.

This combined with the high-tech rubber compounds of Trelleborg Industrial AVS with relatively low dynamic stiffness features ensure good isolation from idling speed up to the maximum speed of the engine and ensure low life time cost! Trelleborg Height Adjusters HA and HAD Series can be used with Cushyfloat™ mountings.

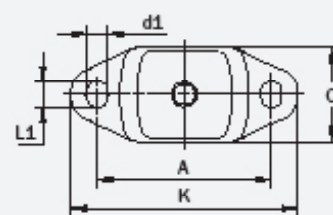


17/1609
17/1657



Nominal stiffness ratio $K_v : 1 \bullet K_L : 2.5 \bullet K_r : 0.75$

17-1600



Product Data

DRAWING No.	PART No.	TYPE	DIMENSIONS (mm)										MAX LOAD (kg)		MAX THRUST LOAD (N)	WEIGHT (kg)
			B	C	A	K	H	d1	L1	d2	L2	G	VERTICAL	VERTICAL WITH THRUST		
17-1600	10-00535	45 IRH	62	60	100	120	38-40.5	11	14	11	14	M12	50	35	370	0.36
	10-00536	55 IRH	62	60	100	120	38-40.5	11	14	11	14	M12	65	55	560	0.36
	10-00537	65 IRH	62	60	100	120	38-40.5	11	14	11	14	M12	100	80	830	0.36
17-1609	10-00545	45 IRH	76	75	140	183	49	13	20	13	30	M16	150	95	1000	0.86
	10-00546	55 IRH	76	75	140	183	49	13	20	13	30	M16	210	140	1500	0.86
	10-00547	65 IRH	76	75	140	183	49	13	20	13	30	M16	300	210	2300	0.86
	10-00548	75 IRH	76	75	140	183	49	13	20	13	30	M16	450	315	3300	0.86
17-1657	10-00557	45 IRH	72	112.5	182	228	70	18	26	18	34	M20	300	250	2800	2.25
	10-00558	55 IRH	72	112.5	182	228	70	18	26	18	34	M20	520	370	4200	2.25
	10-00559	65 IRH	72	112.5	182	228	70	18	26	18	34	M20	800	560	6400	2.25
	10-00560	75 IRH	72	112.5	182	228	70	18	26	18	34	M20	1000	700	11800	2.25
17-1841	10-00605	40 IRH	120	190	270	330	112	22	-	-	-	M24	950	630	5300	9.6
	10-00606	50 IRH	120	190	270	330	112	22	-	-	-	M24	1400	945	7100	9.6
	10-00607	60 IRH	120	190	270	330	112	22	-	-	-	M24	2200	1575	12500	9.6
	10-00608	70 IRH	120	190	270	330	112	22	-	-	-	M24	3000	2100	18000	9.6

NOTE: M-Max* = With Thrust Force

Product performance information given is nominal static data. In some applications static or dynamic properties may be critical. For any proposed application, an assessment by our Design and Applications team may be required.



WWW.TRELLEBORG.COM/ANTI-VIBRATION-SOLUTIONS

For further information visit our website or e-mail industrialavs@trelleborg.com

The content in this datasheet was correct at the time of printing, but is subject to change without notice.